

No.	Name	Sex	Age	Measure	Descriptions
2793	Andree	♂	12	4-9	Reddish with spots on face
2794	Wucher	♂	10	4-14	Blackish with dark long mark on breast scarcely small mark
2795	Linnaea	♂	10	4-9	Yellow complexion 2 small spots on side of eye & small dark mark
2796	Anna	♀	12	4-10	Small dark on belly very hairy
2797	Perry	♂	11	4-7	Large mark on breast, small mark on left temple. 1st mark down belly
2798	Maguire	♂	11	4-10	Scarf from eye temple over eye to nose black mark down forehead, 1st on breast
2799	Anna	♀	11	4-7	2 scars under chin, one over left eye & 1 on forehead
2800	Juliet	♀	9	4-5	Yellow complexion small scars right side 1st left shoulder
2801	Clay	♂	9	4-10	Scarf from eye to nose & 1 on forehead of face
2802	Carsha	♂	10	4-10	Scarf from eye to nose & 1 on forehead of face outside left knee
2803	Acambona	♂	9	4-10	Yellow complexion 2 small scars left eye, 1st right shoulder
2804	Chico	♂	9	4-10	Small mark from breast to breast faint scar top of belly
2805	Thoor	♂	10	4-7	Scarf on upper lip, dark on forehead, black mark down eye to nose & 1 on forehead of face
2806	Oron	♂	9	4-5	Dark from each eye to eye, dark over right eye left breast scarred
2807	Catchique	♂	10	4-7	Large scar on nose, small dark patches of each eye, large mark on breast

2792



N ^o	Names	Sex	Age	Measure	Descriptions
2793	Andoqui	Boy	12	4. 9	Side lips or mouth open left sculler.
2794	Wenchee	"	10	4. 8 1/2	Black mark each breast. Long mark from breast down belly. Scar left breast.
2795	Annadica	"	13	4. 9	Yellow complexion. 2 scars side of right to over side of left eye. Scar under breast.
2796	Dammae	"	12	4. 6 1/2	Faint dent on belly. Scar hairy.
2797	Peaggo	"	11	4. 7 1/2	Large scar on breast. Round mark on left temple. Scar down belly.
2798	Cucagui	"	11	4. 6 1/2	Scar from ear temple over eye, ear, to nose. Black mark down forehead. Scar on breast.
2799	Aqua	"	11	4. 7	2 scars under chin. Scar over left eye. Scar on forehead.
2800	Tutoulay	"	9	4. 5	Yellow complexion. Several scars right side. Scar left shoulder.
2801	Uijay	"	9	4. 4 1/2	Scar upper lip. Scar on left eye. Scar right side of head.
2802	Enocha	"	10	4. 5 1/2	Faint scar on belly. Large scar on left elbow. Scar outside left knee.
2803	Accabeona	"	9	4. 4 1/2	Yellow complexion. 2 small scars near left eye. Scar right shoulder.
2804	Ochee	"	9	4. 5 1/2	Dark brown mark from breast to breast. Faint scar top of belly.
2805	Chooor	"	10	4. 7 1/2	Scar on upper lip. Dent on forehead. Black mark down scar. Scar close to right elbow. Scar right knee.
2806	Croo	"	9	4. 5 1/2	Mark from each ear to eye. Dent over right eye. Left breast scarred.
2807	Catchique	"	10	4. 7 1/2	Large dent on nose. Mark down forehead side of each eye. Large mark on breast.



[Faint, illegible handwriting in a ledger format, possibly containing names and dates.]

27 92



No.	Name	Sex	Age	Measure	Description
2808	Spencer	♂	12	4. 6.5	Measure on temple length down right eye 4" back of left shoulder
2809	Langley	♂	13	4. 7.5	Point across back of left shoulder 4" between shoulders
2810	Wick	♂	9	4. 5.5	Measure from forehead small ear left ear to bottom of neck
2811	Wick	♂	12	4. 7	Line from left side belly 2. across ear down to temple
2812	Whitney	♂	13	4. 7.5	Line from left eye to ear 2. across ear down to temple
2813	Crowder	♂	10	4. 5.5	Line from left breast corner of eye 2. across ear to temple 3. across ear to temple
2814	Boyer	♂	9	4. 5.5	Point across from forehead 1.6" on temple. Measure ear to ear on black
2815	Boyer	♂	12	4. 6.5	Measure from temple long face
2816	Boyer	♂	10	4. 4.5	Line from ear to ear on head. Measure from ear to ear back of shoulder 1" on back
2817	Wick	♂	13	4. 5.5	Line from ear to ear on head. Measure from ear to ear back of shoulder 1" on back
2818	Wick	♂	12	4. 6.5	Measure from forehead 2.0" ear of right side of left eye 1.0" below left eye
2819	Wick	♂	11	4. 6.5	Line from right side ear to ear on right side of ear
2820	Wick	♂	11	4. 5.5	Line on chin from nose to chin on right breast
2821	Wick	♂	9	4. 4.5	Point from right breast. ear left ear to ear
2822	Wick	♂	12	4. 7.5	Measure from forehead 2.0" on cheek 2.5" chin
2823	Wick	♂	11	4. 6.5	Line of ear down each side ear to ear 2.0" ear left eye
2824	Wick	♂	13	4. 5.5	Line from left eye to ear. Measure from ear to ear left ear at right ear
2825	Wick	♂	13	4. 8	Line from small ear below left breast 4" right breast at under ear
2826	Wick	♂	11	4. 7	Line from ear to ear across temple. Measure from ear to ear left ear

2) 92
36
2826



N ^o	Names	Sex	Age	Height	Description
2808	Apanusa	Boy	12	4. 6 1/2	Scar on temples; large d. over right eye. d. back of left shoulder
2809	Ingby	"	13	4. 7 1/2	Faint scar back of left shoulder; d. between shoulders
2810	Oda	"	9	4. 5 1/2	Small dent forehead; small scar left wrist; hollow front navel.
2811	Olaf	"	12	4. 7	Long cut left side belly; 2 semi-circular tattoos on temples
2812	Obellay	"	12	4. 7 1/2	Scar above left eyebrow; round dent; right side belly.
2813	Carolina	"	10	4. 5 1/2	Large scar left breast; numbers of scars @ temples; 3 tattoos above navel.
2814	Adjo	"	9	4. 5 1/2	Faint tattoo down forehead; 1 d. on temple. Hair so ear very black
2815	Pohay	"	12	4. 6 1/2	Scarred near temples; long face
2816	Chaytee	"	13	4. 9 1/2	Scar side of an eye; small scar on breast; some faint scars back of shoulder & on back.
2817	Meatw	"	13	4. 8 1/2	Long faint cut on right elbow; scar back of right hand
2818	Borawouca	"	12	4. 6 1/2	Faint scars between eyebrows; 2 d. side of right & side of left eye; scar below left elbow.
2819	Agway	"	10	4. 6 1/2	Large burn right side neck; small scar right arm below elbow
2820	Audollay	"	11	4. 5 1/2	Scar on chin; prominent chin; scar right breast
2821	Mpsachay	"	9	4. 4 1/2	3 faint scars right breast; scar left arm pit.
2822	Egbula	"	12	4. 7 1/2	Along 9 scars on forehead; 12 d. on chest; 3 d. chin.
2823	Anucughee	"	11	4. 6 1/2	Flows of scars down each cheek; small d. near left eye;
2824	Banadonga	"	13	4. 9 1/2	cut left elbow; round scar below d. scar left side; d. right knee
2825	Ouday	"	13	4. 8	Large & small scar below left breast; d. right shoulder; d. under d.
2826	Suan	"	11	4. 7	Very much scarred about temples; small dent left eyebrow



[Faint, illegible handwriting on aged paper]

2) 9 2
3 4


28 2 6

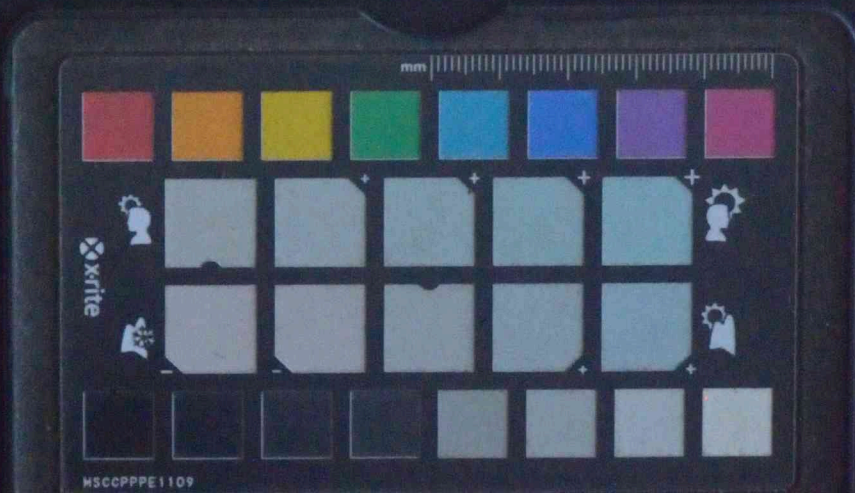


No.	Name	Sex	Age	Measure	Description
2327	Squamea	♂	26	5-2	Yellow complexion & narrow forehead. Small dent top of belly.
2328	Mauro	♂	27	5-2	Large round nose above small left side of belly diversified temple round. straight cheek.
2329	Squamea	♂	26	5-3	5 lines of scars down belly. small eye. yellow complexion.
2330	Squamea	♂	26	4-6	Scars of scars down breast belly. faint scar on left eye.
2331	Lalla	♂	26	4-10	Forehead mark tattoo. Both marks on left eye.
2332	Squamea	♂	18	4-9	Very large ears each cheek forehead slightly raised few spots on belly.
2333	Pige	♂	21	5-1	Tattoo on forehead and nose from ear to mouth. (tattoo same)
2334	Sto	♂	19	5-0	Black mark temple scar down breast & belly. small dent on right eye. black mark right arm below elbow.
2335	Pige	♂	18	4-3	Dent forehead faint scar down right temple round.
2336	Ma	♂	19	5-1	Spade on ear temple mark down forehead. straight nose with a convex and convex line of scars down belly.
2337	Pido	♂	25	5-2	Dent left cheek in temple marked. Scar down belly a half down and a scar on ear belly.
2338	Ambo	♂	26	5-1	Pair of scars from ear to eye 16 down forehead & all down belly. 12 white marks all over in front lower ear on left eye dent near mouth.
2339	Nekey	♂	25	5-0	Hollow round nose. 2 scars on back front straight forehead.
2340	Eda	♂	20	5-2	Temple marked forehead scar left shoulder scar left side breast belly tattoo.
2341	Mafo	♂	27	5-4	Black mark side of nose scar forehead. tattoo on eye. brown scar on ear a small black mark left arm below elbow.
2342	Ada	♂	20	5-1	Small line of scars down ear down breast pair of scars down breast and belly several dent right arm.
2343	Maoma	♂	24	5-1	Scar on right eye. scar on ear and on large round nose large ear left knee.

[Faint handwritten notes on the right page, mostly illegible due to fading and bleed-through.]



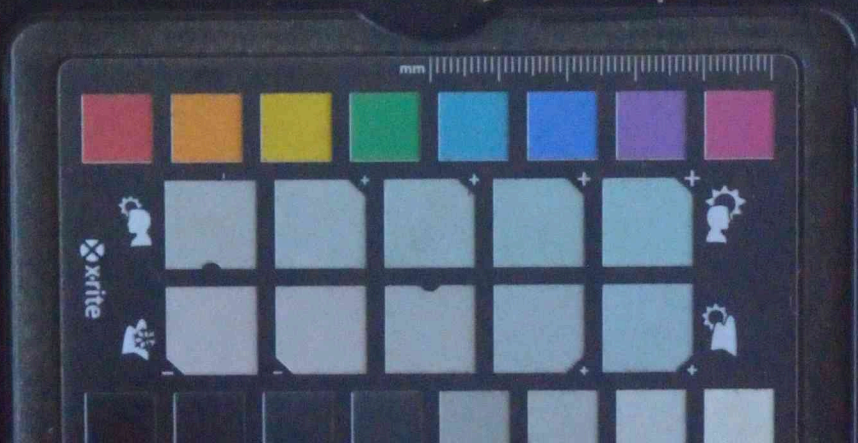
No.	Name	No.	Age	Sex	Description
2827	Aquamia	Man	24	5-2	Yellow complexion: 2 scars on forehead: small dent top of belly.
2828	Maacca	"	27	5-3	3 long & round scars above navel: left side of belly scarified temples scarred: scar right chest.
2829	Suama	"	26	5-3	5 rows of scars down belly: small eye: yellow complexion.
2830	Accuba	"	23	4-6	4 rows of scars down breast & belly: faint scar on left eye.
2831	Lallo	"	20	4-10	Forehead marked tattooed: 6 black marks across left arm below elbow
2832	Acanda	"	18	4-9	3 very large scars each chest: forehead slightly scarred face forkmarked
2833	Pago	"	21	5-1	Tattooed on forehead: rows of scars from ear to mouth: ^{teeth} _{scarred}
2834	Akora	"	19	5-0	Black each temple: scar down breast & belly: small dent over right eye: 3 black marks right arm below elbow.
2835	Ongo	"	18	4-8	Dent forehead: faint scar down d: right temple scarred.
2836	Mi	"	19	5-1	Spade on ea. temple: mark down forehead: 3 straight rows with a convex and concave row of scars down belly.
2837	Odo	"	25	5-2	Dent left chest: ea temple marked  4 rows down belly: a half-moon and a star on side belly.
2838	Amboa	"	26	5-1	Row of scars from ea ear to eye: 1st down forehead: 4 do down belly: ea chest mark with row in faint lines: scar over left eye dent near navel.
2839	Nichey	"	25	5-0	Hollow round navel: 2 scars on back: faint marks scalp forehead
2840	Eoda	"	20	5-2	Temples marked & scarred: scar left shoulder: scars left side breast: belly tattooed.
2841	Mafo	"	27	5-1	Black mark side of ea eye: scar forehead: tattooed between eye brown scar left chest: 4 double black marks left arm below elbow.
2842	Ada	"	20	5-1	2 double row of ten round scars each down left arm: pair of scars down breast and belly: several dents right arm.
2843	Msona	"	24	5-1	Scar over right eye: spade side of each eye: large navel: very large scar left knee.



Faint, illegible handwriting at the top of the page, possibly a header or title.

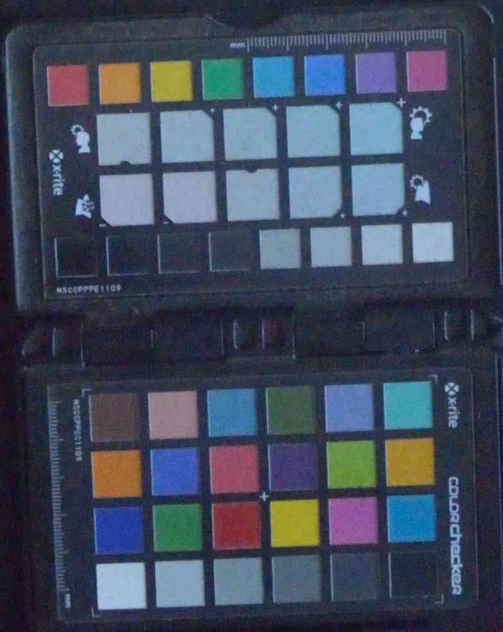
Main body of the page containing several lines of very faint, illegible handwriting.

Fragmentary handwriting visible along the left edge of the page.



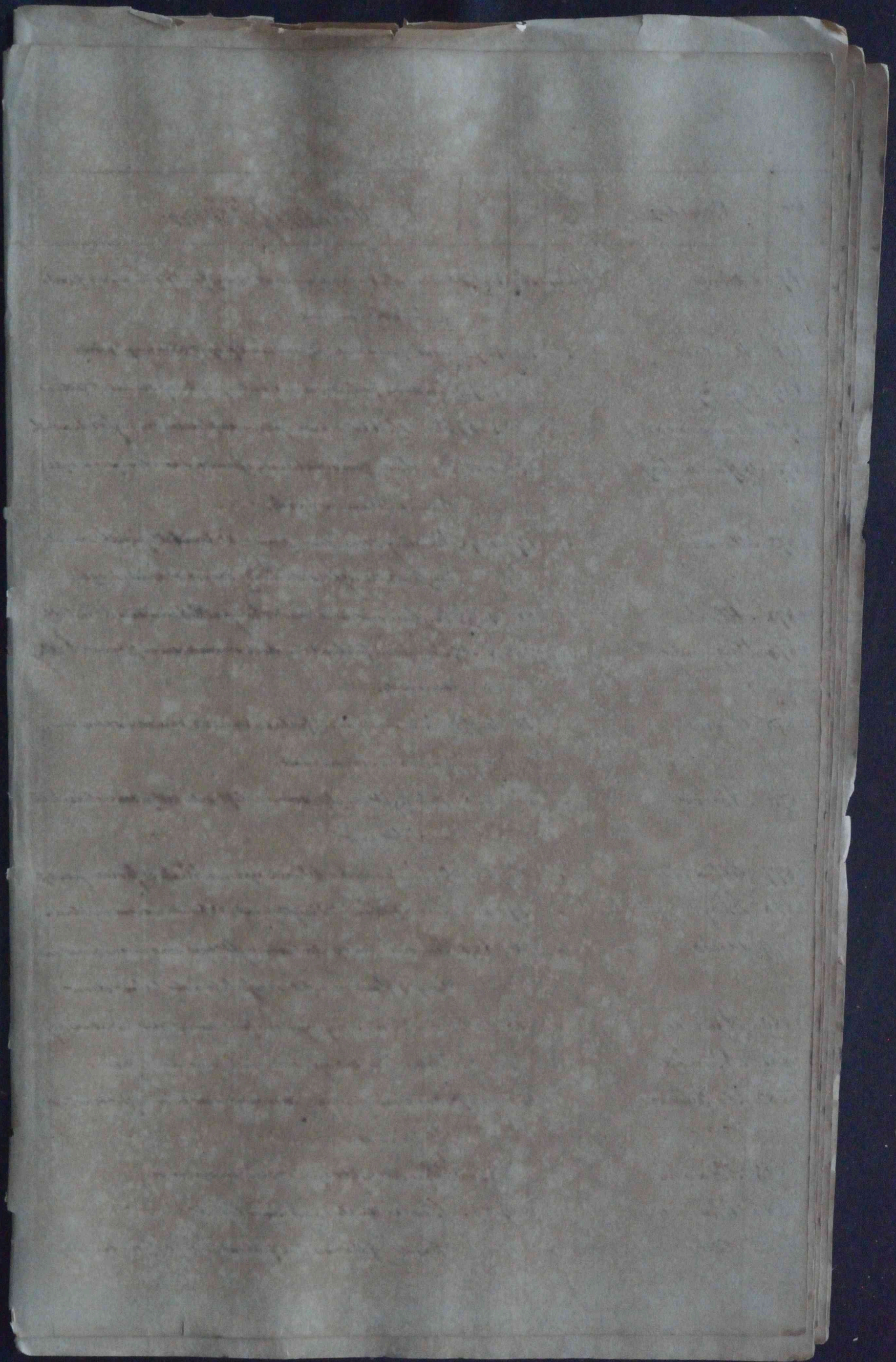
No.	Name	No.	Age	Sex	Description
2344	Amouhae	23	2405	Male	Single pair of eyes from forehead and forehead with one of legs from same side
2345	Ellifio	17	4-11	Male	Black mark on neck, some on belly
2346	Amouhae	22	5-18	Male	Some of eyes from forehead and cheeks toward leg from back
2347	Becca	15	5-18	Male	Some of eyes from forehead and forehead with one of legs from same side
2348	Amouhae	17	5-18	Male	Some of eyes from forehead and forehead with one of legs from same side
2349	Amouhae	22	5-18	Male	Some of eyes from forehead and forehead with one of legs from same side
2350	Amouhae	20	5-18	Male	Some of eyes from forehead and forehead with one of legs from same side
2351	Amouhae	18	5-18	Male	Some of eyes from forehead and forehead with one of legs from same side
2352	Amouhae	19	5-18	Male	Some of eyes from forehead and forehead with one of legs from same side
2353	Amouhae	20	5-18	Male	Some of eyes from forehead and forehead with one of legs from same side
2354	Amouhae	18	5-18	Male	Some of eyes from forehead and forehead with one of legs from same side
2355	Amouhae	18	5-18	Male	Some of eyes from forehead and forehead with one of legs from same side
2356	Amouhae	18	5-18	Male	Some of eyes from forehead and forehead with one of legs from same side
2357	Amouhae	18	5-18	Male	Some of eyes from forehead and forehead with one of legs from same side
2358	Amouhae	18	5-18	Male	Some of eyes from forehead and forehead with one of legs from same side
2359	Amouhae	18	5-18	Male	Some of eyes from forehead and forehead with one of legs from same side
2360	Amouhae	18	5-18	Male	Some of eyes from forehead and forehead with one of legs from same side
2361	Amouhae	18	5-18	Male	Some of eyes from forehead and forehead with one of legs from same side
2362	Amouhae	18	5-18	Male	Some of eyes from forehead and forehead with one of legs from same side
2363	Amouhae	18	5-18	Male	Some of eyes from forehead and forehead with one of legs from same side
2364	Amouhae	18	5-18	Male	Some of eyes from forehead and forehead with one of legs from same side
2365	Amouhae	18	5-18	Male	Some of eyes from forehead and forehead with one of legs from same side
2366	Amouhae	18	5-18	Male	Some of eyes from forehead and forehead with one of legs from same side

[Faint, mostly illegible handwritten text on the right page of the manuscript, possibly bleed-through from the reverse side.]



N.	Names	Sex	Age	Stature	Description
2844	Amouchae	Woman	23	4.10.5	3 triple rows of scars from eyebrows, more forward & black side of eye; scar down each cheek.
2845	Ellafus	"	17	4.11	Wedge right side nose; scarred down belly.
2846	Amoucca	"	22	5.15	3 rows of scars over each eye; temples and cheeks scarred; 2 large scars on back.
2847	Becca	"	18	5.11	Small eyes; scarred down broad belly in creases.
2848	Amayday	"	17	5.0	Small scar over left eye; 2 left side nose.
2849	Appa	"	22	5.15	Scars tattooed on side forehead; hollow nose; 2 on all around side.
2850	Appa	"	20	5.0	2 scars on forehead; forehead and chin scarred; 2 on temple.
2851	Amoucca	"	15	4.9	Prominent lips; small scars; small dent left side nose.
2852	Spingalashce	"	19	5.15	Scar down forehead & 2 cheeks; 9 scars side each eye.
2853	Shacco	"	20	4.6	Scar side of eye; scarred nose.
2854	Matto	"	18	5.0	Large scar left side temple; scarred; large scar left arm above elbow.
2855	Becca	"	15	4.11	3 rows of scars except forehead; 1.6" down 1.2" scar side of eye scarred down nose.
2856	Ekama	"	15	4.7	Scar right breast; scarred down belly; 2 scars on 1.6"
2857	Amayday	"	14	4.6	Scarred nose.
2858	Ada	"	17	5.1	Scar nose; scar on forehead; X temple marked.
2859	Appa	"	14	4.10.5	Black marks on temples; scars of scars down belly & round breast; large scar.
2860	Siche	"	14	4.11	Wedge over right eye; scars of scars down belly; scar right side belly.
2861	Aquama	"	14	4.10	Faint mark near mouth; 1.6" left breast.
2862	Ada	"	14	4.8	Scarred teeth on face; scar right shoulder; thick lips.
2863	Mocotally	"	15	5.3	Scars between eyebrows & scars on temple; scar close to right ear.
2864	Boda	"	14	4.9	Black mark side of eye; 2 near left eye.
2865	Ada	"	14	4.7	Black mark down forehead; small scar on 1.6" scar left arm above elbow.
2866	Outajay	"	20	4.10	Scarred side of eye; scarred down broad belly.





N ^o	Name	Measure	Description
2867	Eden	11	Small, dark brown, very smooth, and very fine, some are of the size of a pea, others are like the size of a nut.
2868	Scapa	12	4-5. Small, round, some are like the size of a pea, others are like the size of a nut.
2869	Alphey	13	4-5. Small, round, some are like the size of a pea, others are like the size of a nut.
2870	Manacua	14	4-5. Small, round, some are like the size of a pea, others are like the size of a nut.
2871	Offa	15	4-5. Small, round, some are like the size of a pea, others are like the size of a nut.
2872	Alack	16	4-5. Small, round, some are like the size of a pea, others are like the size of a nut.
2873	Alack	17	4-5. Small, round, some are like the size of a pea, others are like the size of a nut.
2874	Manama	18	4-5. Small, round, some are like the size of a pea, others are like the size of a nut.
2875	Comie	19	4-5. Small, round, some are like the size of a pea, others are like the size of a nut.
2876	Alack	20	4-5. Small, round, some are like the size of a pea, others are like the size of a nut.
2877	Alack	21	4-5. Small, round, some are like the size of a pea, others are like the size of a nut.
2878	Alack	22	4-5. Small, round, some are like the size of a pea, others are like the size of a nut.
2879	Alack	23	4-5. Small, round, some are like the size of a pea, others are like the size of a nut.
2880	Alack	24	4-5. Small, round, some are like the size of a pea, others are like the size of a nut.
2881	Alack	25	4-5. Small, round, some are like the size of a pea, others are like the size of a nut.
2882	Alack	26	4-5. Small, round, some are like the size of a pea, others are like the size of a nut.
2883	Alack	27	4-5. Small, round, some are like the size of a pea, others are like the size of a nut.
2884	Alack	28	4-5. Small, round, some are like the size of a pea, others are like the size of a nut.
2885	Alack	29	4-5. Small, round, some are like the size of a pea, others are like the size of a nut.



N ^o	Names	Sex	Age	Measure	Descriptions
2867	Edlem	Male	16	4-11 1/2	Thin, slender, brown down on all belly faintly stained with red eye large, brown on head
2868	Hoopa	"	14	4-9 3/4	Thin, slender, brown down on all belly, some red on eye, yellow complexion.
2869	Ogway	"	24	4-9 3/4	Thin down forehead, scarred on temple, belly stained & tattooed.
2870	Mamouccas	"	16	4-8 1/2	Thin, black, hollow head, yellow complexion, scarred on side mouth.
2871	Affauchay	"	20	4-10 1/2	Thin, black, fine scar between eyebrows, scarred near eye. Scarred scar on back.
2872	Stocks	"	19	4-9 1/2	Thin, brown, scar down breast, 11 scarred belly with several scars on right side, large scar near eye.
2873	Atlacha	"	22	4-9 1/2	Thin, brown, scar down breast & belly, with 5 scarred d. on belly.
2874	Mingama	"	35	4-10 1/2	Thin down forehead, in thick scarred scar on breast, belly scarred.
2875	Oronto	"	15	4-8 1/2	Black marks down forehead & nose, 2 scarred scars on forehead, scar on breast.
2876	Abocca	"	16	4-8	Mole right temple, scarred left side belly, scar close to toe on right foot.
2877	Elbiagga	"	26	5-4	2 Black marks between eyebrows, black crop side of eye.
2878	Ehoy	"	19	4-10	Scar on forehead, 2 d right breast, d between shoulder blades.
2879	Ucco	"	20	5-4	Scar side of eye, scar near right eye, scar down breast and belly, 3 black marks across left arm below elbow.
2880	Aquie	"	15		Black mark side of right eye, faint scar left breast, d above d.
2881	Namoa	"	16		Thin, black, scar right side mouth, scar near left ear.
2882	Pahuma	"	15	4-9 1/2	Thin, slender, tallish, thin belly, scar below left breast, d. right wrist.
2883	Magos	"	14	4-8 1/2	Scar side right eye, d between eyebrows.
2884	Chuma	"	14		Scar on temple, scar above left d.
2885	Oshu	"	17		Number of short scars on forehead, tattooed from ear to eye.



[Faint, illegible handwriting on aged paper]

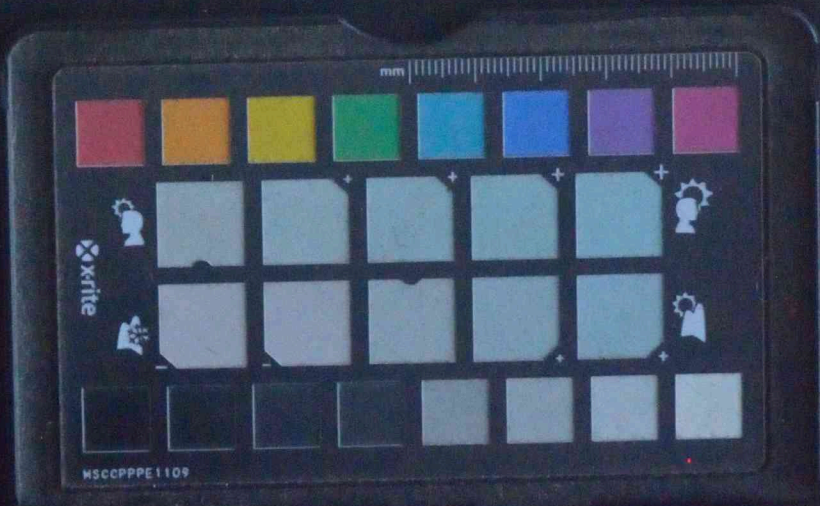


No.	Name	Sex	Age	Description
2886	Moran	Female	18	Least side of each eye, round mark right cheek, small ear H. Inset below right ear
2887	Moran a same	Male	18	4-15. Black on cheek, brown breast. Body very large & supple in breast
2888				
2889				
2890				
2891				
2892				
2893	Magher	Male	13	4-11. Small, young, feet in water, small, black
2894	Eden		12	4-12. Black on head, brown breast, belly, feet, front & end of ear each eye
2895	Cornifer		12	4-10. Brown on head, brown on left eye
2896	Congremer		12	4-15. Black on head, side of ear, black on breast, black on ear on left side of ear
2897	Beccay		12	4-13. Small, feet, small, brown on eye, on back of eye, white
2898	Beccay		10	4-8. Black on head, side of ear
2899	Congremer		13	4-13. Small, feet, small, brown on eye, on back of eye, white
2900	Uyalla		12	4-15. Black on head, side of ear, large on left cheek at tip of forehead
2901	Aballe		10	4-8. Black on head, large on left ear, small on ear
2902	Mansawat		10	4-7. Small, ear, left head
2903	Molena		10	4-7. Black on head, side of ear, large on left
2904	Salashue		11	4-8. Black on head, side of ear, small on side of right eye that white part of belly

2826
66
2892



No.	Names	Sex	Age	Measure	Description
2886	Morro	Woman	18		Scars on side of each eye, scars on each right cheek: small scars 12. In each lower right ear.
2887	Morro a Tamo	"	16	4.11	Entirely on cheeks down breast belly; very large nipples on breast.
2888					
2889					
2890					
2891					
2892					
2893	Allagher	Girl	13	4.11	Scars on front on neck & right cheeks.
2894	Edem	"	12	4.10	Scars on forehead down breast & belly four faint scars on each eye.
2895	Cernafo	"	12	4.10	Scars on hand scars on left eye.
2896	Cogorinto	"	12	4.8	Black mark side of each eye below nose. 3 black marks on left arm below elbow.
2897	Becay	"	12	4.7	2 very faint scars on each eye & on back of right shoulder.
2898	Becay	"	10	4.5	Black mark side of an eye.
2899	Angudy	"	13	4.9	2 scars right side of breast 2 ft. back of ft. 10" left side of ft.
2900	Ayalla	"	12	4.7	Black on side side of an eye. Large scar on left cheek: 12. Left side of forehead.
2901	Achullo	"	10	4.5	Yellow mark large on left arm above elbow.
2902	Manjaral	"	13	4.7	Small scar left breast.
2903	Molina	"	13	4.7	Black mark side of an eye belly scarified.
2904	Galachic	"	11	4.5	Black mark side of an eye 2 faint scars side of right eye dent upper part of belly.



van

als

u

u

u

u

[Faint, illegible handwriting, possibly bleed-through from the reverse side of the page]

2826
 66
 ———
 2892



No	Name	Sex	Age	Location	Description
295	Amagga	♂	12-14	Point near left arm above the joint on above part	
296	Aminga	♂	12-14	Large ear left side of breast at left side joint on part	
297	Yusa	♂	12-14	Each side of an eye on left side of back at lower part of back	



No.	Names	Sex	Age	Station	Description
2905	Lunayga	Girl	13	4-4 1/2	Round scar left arm above elbow joint scar above wrist.
2906	Lunayga		13	4-7 1/2	Large scar left side forehead: d: left cheek faint d: wrist.
2907	Graf's		12	4-8 1/2	Black mark sides of eye scar left side of back: d: lower part of back.



[Faint, illegible handwriting on aged paper]

